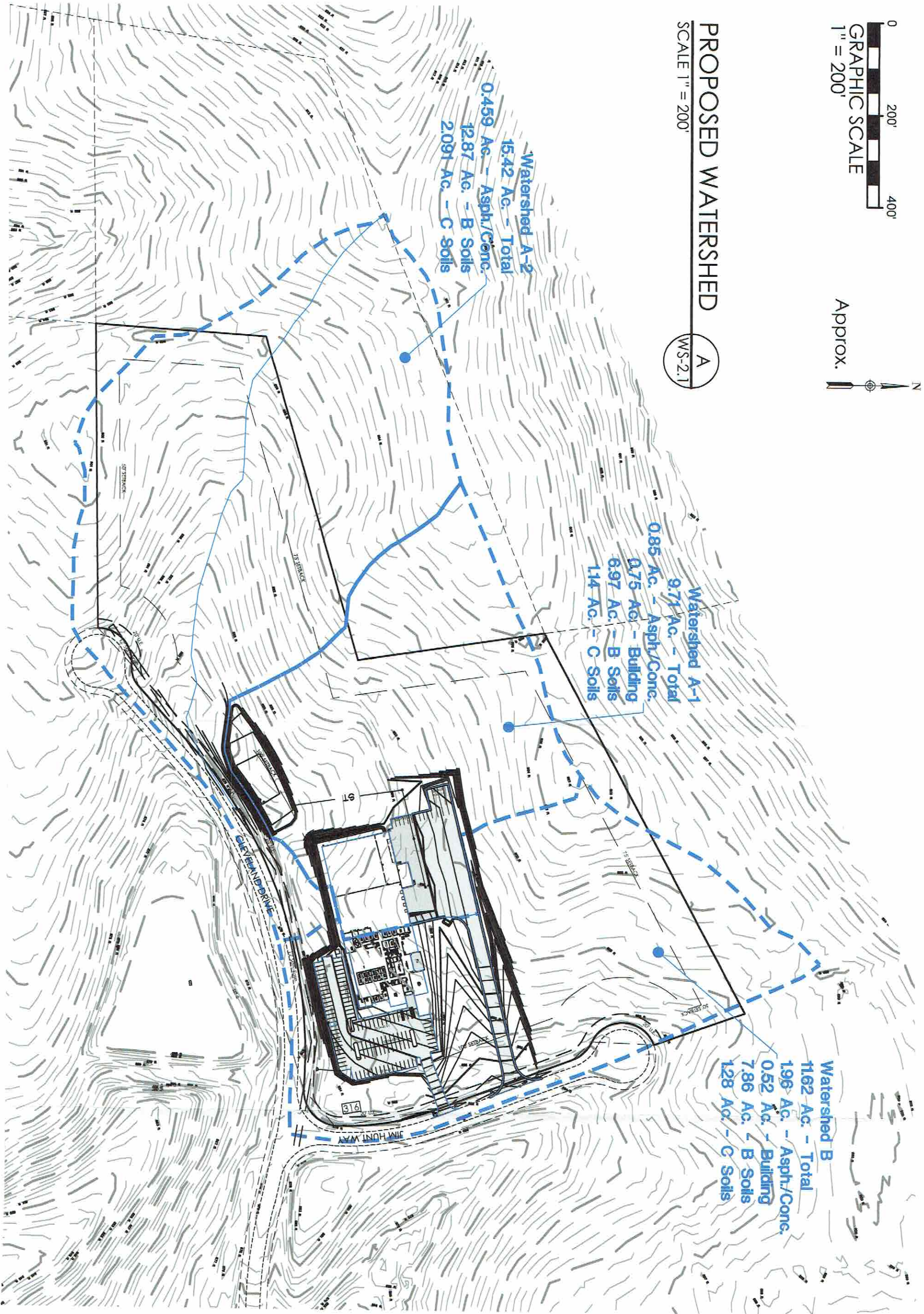


PROPOSED WATERSHED

A
WS-2.1

SCALE 1" = 200'

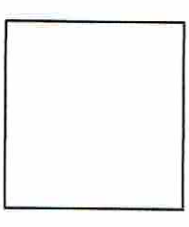


Watershed A-2
15.42 Ac. - Total
0.459 Ac. - Asph./Conc.
12.87 Ac. - B Soils
2.091 Ac. - C Soils

Watershed A-1
9.71 Ac. - Total
0.85 Ac. - Asph./Conc.
0.75 Ac. - Building
6.97 Ac. - B Soils
1.14 Ac. - C Soils

Watershed B
1162 Ac. - Total
196 Ac. - Asph./Conc.
0.52 Ac. - Building
7.86 Ac. - B Soils
128 Ac. - C Soils

DRAWING	DATE
WS-2.1	21 MAY 2018
2 OF 2	FILE
	ARC1801AA
	DRAWN
	JWH



PROPOSED WATERSHED MAP
HUNT BROTHERS PIZZA
SEEDTIME & HARVEST, LLC
110 CLEVELAND DRIVE
PARIS, KY 40361-9782



MLH CIVIL ENGINEERS, PLLC
PO BOX 910379
LEXINGTON KY 40591
john@mlhcivil.com
PH/FAX 859-219-1066
CELL 859-552-4103