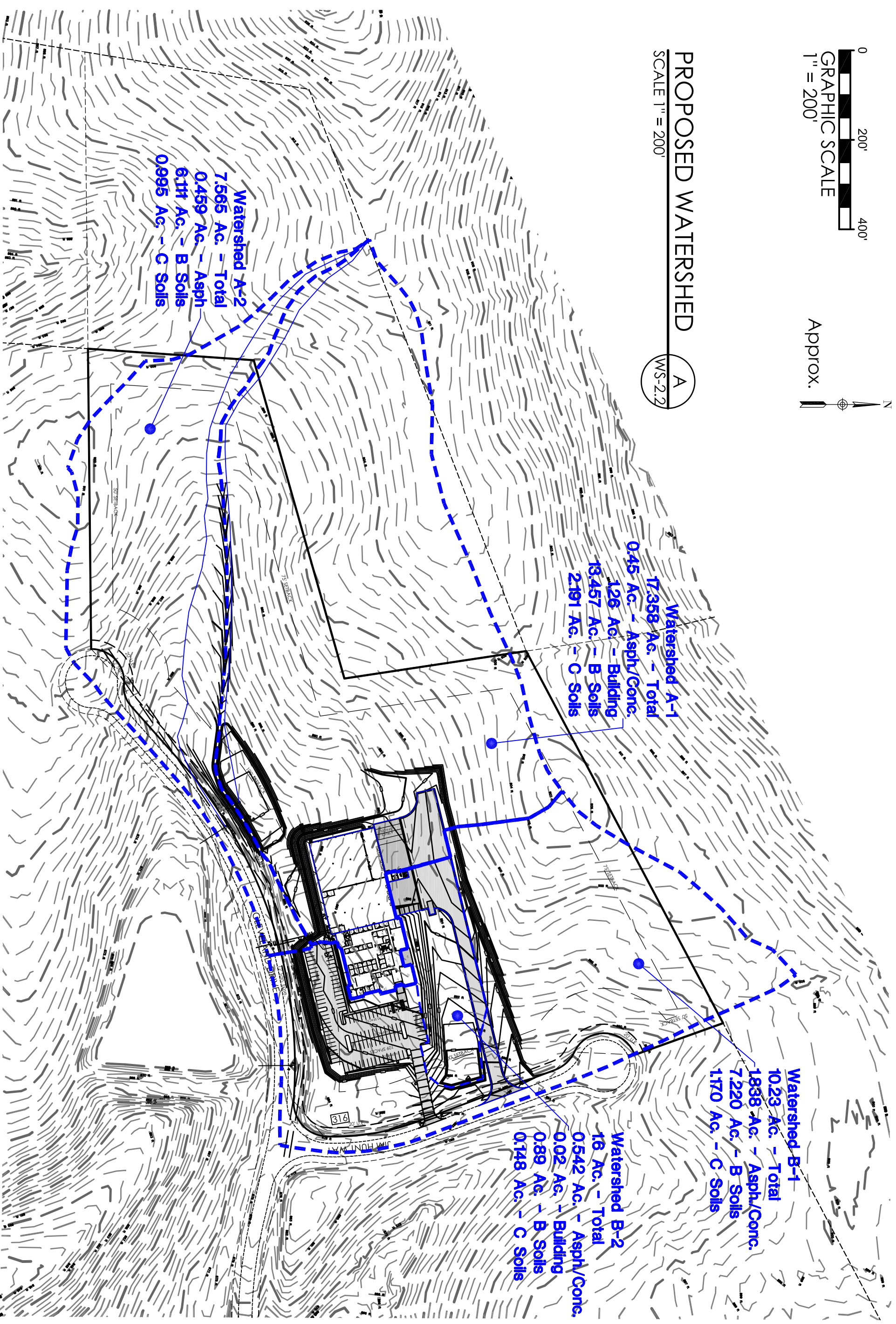
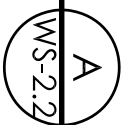


PROPOSED WATERSHED

SCALE 1" = 200'



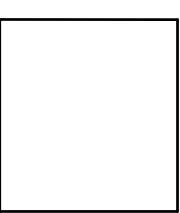
Watershed A-2
7,565 Ac. - Total
0,459 Ac. - Asph
6,111 Ac. - B Soils
0,995 Ac. - C Soils

Watershed A-1
17,358 Ac. - Total
0,45 Ac. - Asph/Conc.
1,26 Ac. - Building
13,457 Ac. - B Soils
2,191 Ac. - C Soils

Watershed B-1
10,23 Ac. - Total
1,838 Ac. - Asph/Conc.
7,220 Ac. - B Soils
1,170 Ac. - C Soils

Watershed B-2
16 Ac. - Total
0,542 Ac. - Asph/Conc.
0,02 Ac. - Building
0,89 Ac. - B Soils
0,148 Ac. - C Soils

DRAWING	DATE
WS-2.3	06 JUL 2018
2 OF 2	FILE
	ARC1801AA2
	DRAWN
	JWH



PROPOSED WATERSHED MAP
HUNT BROTHERS PIZZA
SEEDTIME & HARVEST, LLC
110 CLEVELAND DRIVE
PARIS, KY 40361-9782



MLH CIVIL ENGINEERS, PLLC
PO BOX 910379
LEXINGTON KY 40591
john@mlhcivil.com
PH/FAX 859-219-1066
CELL 859-552-4103