

SITE STATISTICS
 Total Area - 34.00 Acres
 Lots proposed - 122
 Gross Density - 3.59
 Net Density - 5.54

Setback Dimensions
 Front - 20'
 Side - 5'
 Rear - 25'
 Note:
 Building Setbacks will be utilized in tandem with utilities.

Area in Street R/W - 7.21 Acres
 Area in Lots - 22.03 Acres
 Smallest Lot - 6,310 Sq Ft
 Largest Lot - 13,703 Sq Ft
 Average Lot - 7,391 Sq Ft.

Utility Companies
 Telephone: AT&T Services-KY
 Electric: Kentucky Utilities Co
 Old Dominion Power
 City of Paris
 Water: City of Paris
 Gas: Columbia Gas Co

Utility Note
 Underground utilities shown on this "Prel. Subdivision Plat" were marked in the field (03-01-2018) by The Utility Protection Center "KENTUCKY 811 CALL BEFORE YOU DIG", (toll Free Phone No. 1-800-732-6007) Ticket No. 1803010552, 1803010579, 1803010581, 1803010584. This number was established to provide accurate location of existing underground utilities (i.e. Cables, Water, Electric Wires, & Gas)

Purpose: This Preliminary Major Subdivision Plat is intended for general purposes only for the proposed subdivision of the Houston's Station Subdivision. Said plat is not intended for any other purpose. Said plat is not intended to be a recordable document and should not be interpreted as a complete boundary survey.

CERTIFICATE OF ACCURACY
 I do hereby certify that the plat shown and described hereon is a true and correct survey to the accuracy required by the Bourbon County Joint Planning Commission Office and a urban class survey. The monuments are as shown.
 Method of survey was conducted by GPS "RTK" (real time kinematic) positional accuracy is less than 10" 100' 200 ppm, the horizontal datum is NAD 1983. The bearings shown hereon are based on the Kentucky North State state plane coordinate system derived from a GPS survey. The directions and distances shown on the plat are not based on an adjusted survey. All property corners indicated "found" have been with an iron pin (1" length, 1/2" diameter) and cap stamped #870 unless otherwise noted hereon.

CERTIFICATION OF OWNERSHIP
 We hereby certify that we are the owners of the property shown and described hereon and that we hereby adopt this plat of the development with our own free consent.
 Owner:
 Alliance Banking Company
 695 Bullion Boulevard
 Winchester, Kentucky 40391
 Applicant:
 Centrust Capital Homes LLC

CERTIFICATION OF PRELIMINARY PLAT APPROVAL
 I hereby certify that the Preliminary Major Subdivision Plat shown hereon has been found to comply with the subdivision and development regulations for Paris and Bourbon County, Kentucky, with the exception of such variances, if any, as are noted in the minutes of the planning commission.

CERTIFICATE OF ACCURACY
 I do hereby certify that the plat shown and described hereon is a true and correct survey to the accuracy required by the Bourbon County Joint Planning Commission Office and a urban class survey. The monuments are as shown.
 Method of survey was conducted by GPS "RTK" (real time kinematic) positional accuracy is less than 10" 100' 200 ppm, the horizontal datum is NAD 1983. The bearings shown hereon are based on the Kentucky North State state plane coordinate system derived from a GPS survey. The directions and distances shown on the plat are not based on an adjusted survey. All property corners indicated "found" have been with an iron pin (1" length, 1/2" diameter) and cap stamped #870 unless otherwise noted hereon.

CERTIFICATION OF OWNERSHIP
 We hereby certify that we are the owners of the property shown and described hereon and that we hereby adopt this plat of the development with our own free consent.
 Owner:
 Alliance Banking Company
 695 Bullion Boulevard
 Winchester, Kentucky 40391
 Applicant:
 Centrust Capital Homes LLC

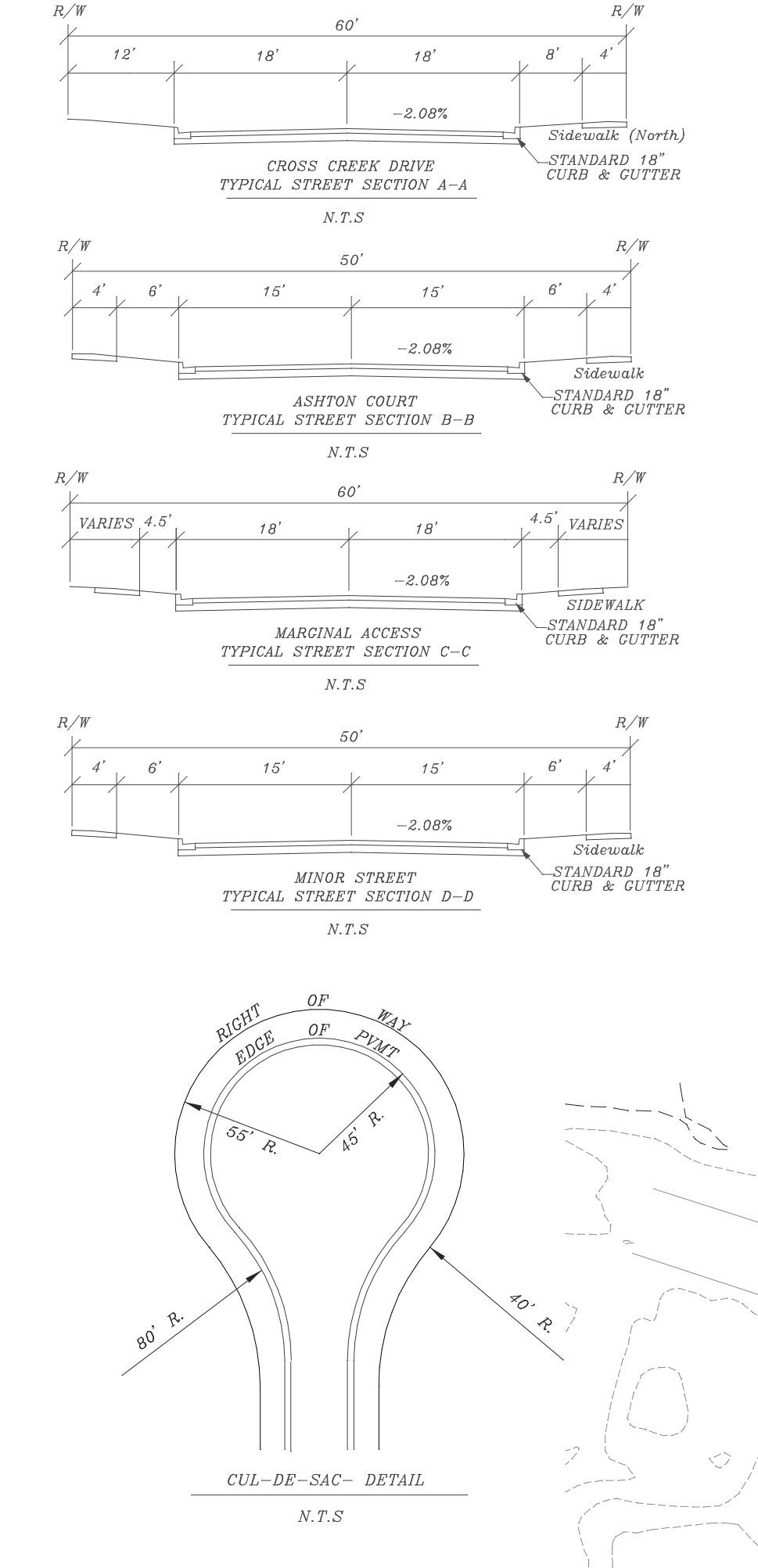
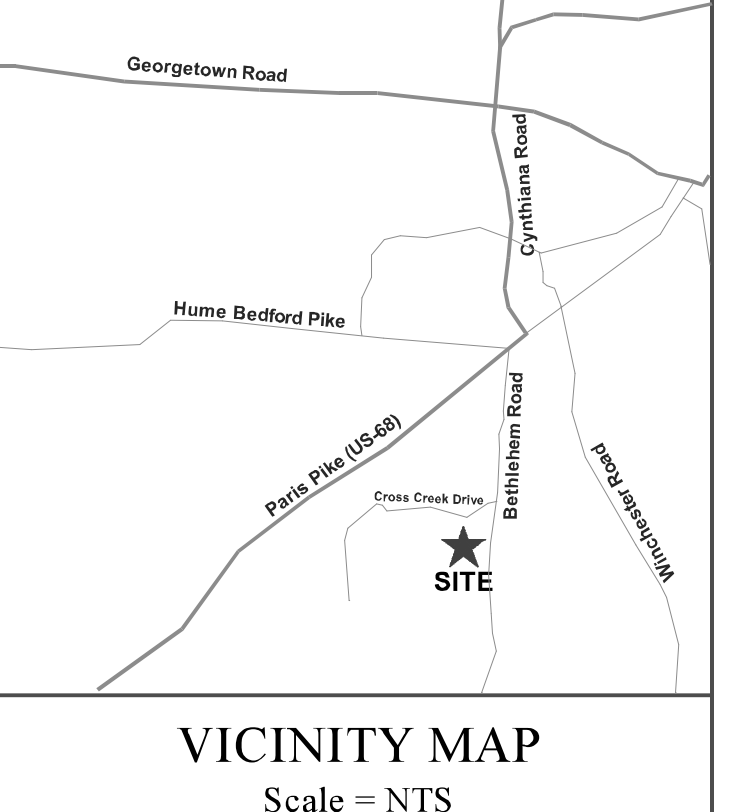
CERTIFICATION OF PRELIMINARY PLAT APPROVAL
 I hereby certify that the Preliminary Major Subdivision Plat shown hereon has been found to comply with the subdivision and development regulations for Paris and Bourbon County, Kentucky, with the exception of such variances, if any, as are noted in the minutes of the planning commission.

CERTIFICATION OF OWNERSHIP
 We hereby certify that we are the owners of the property shown and described hereon and that we hereby adopt this plat of the development with our own free consent.
 Owner:
 Alliance Banking Company
 695 Bullion Boulevard
 Winchester, Kentucky 40391
 Applicant:
 Centrust Capital Homes LLC

CERTIFICATION OF PRELIMINARY PLAT APPROVAL
 I hereby certify that the Preliminary Major Subdivision Plat shown hereon has been found to comply with the subdivision and development regulations for Paris and Bourbon County, Kentucky, with the exception of such variances, if any, as are noted in the minutes of the planning commission.

LEGEND

- Existing Structure - Infrastructure
- Property Boundary
- Edge of Pavement
- Water Line
- Sanitary Line
- Overhead Electrical Line
- Underground Telephone (ATT)
- Gas Line
- Fire Hydrant
- Water Meter
- Gas Meter
- Sanitary Manhole
- Electric Pole
- Property Corners (Parent Tract)
- Property Corners (Proposed)
- Found Property Corners (Metal Stake)
- Found Property Corners (IBC PLS 3553)
- Found Mag Nail

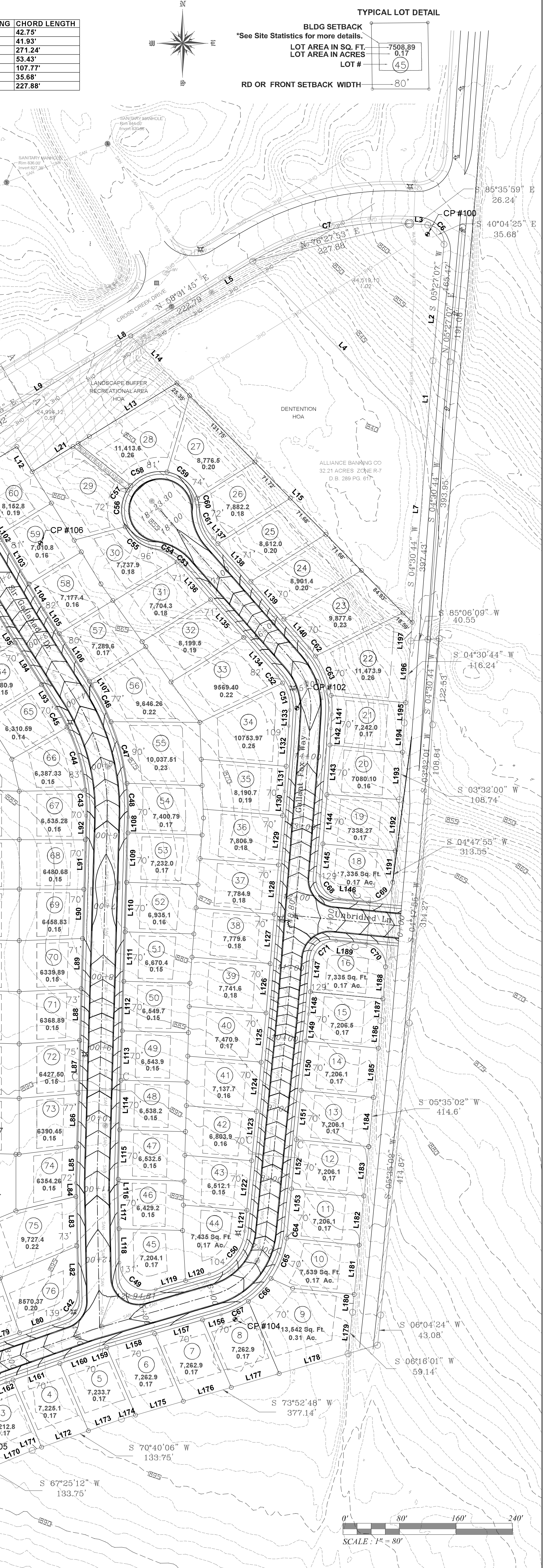


ROW CURVE TABLE

CURVE	ARC LENGTH	RADIUS	DELTA ANGLE	CHORD BEARING	CHORD LENGTH
C1	47.59'	30'	90°53'17"	N 13°05'06" E	42.75'
C2	46.42'	30'	88°39'14"	S 76°41'09" E	41.93'
C3	275.96'	430'	36°48'12"	N 81°25'30" E	271.24'
C4	54.47'	80'	39°00'49"	N 02°41'10" E	53.43'
C5	150.62'	55'	156°54'41"	N 61°57'20" E	107.77'
C6	39.73'	25'	91°03'26"	S 40°04'25" E	35.68'
C7	231.64'	370'	35°52'16"	N 76°27'53" E	227.88'

HOA LINE TABLE

LINE	BEARING	DISTANCE
L1	N 04°30'44" E	110.04'
L2	N 05°27'07" E	165.47'
L3	N 85°35'59" W	26.24'
L4	N 43°11'40" W	351.23'
L5	N 58°31'45" E	202.28'
L6	N 04°30'44" E	260.91'
L7	S 58°31'45" W	20.53'
L8	N 58°31'45" E	256.64'
L9	N 32°12'32" W	18.86'
L10	S 32°12'32" W	18.86'
L11	S 58°31'45" W	87.74'
L12	S 31°28'16" E	41.60'
L13	S 58°31'45" W	145.14'
L14	S 43°11'40" E	59.25'
L15	N 44°31'40" W	474.81'
L16	N 09°12'12" E	188.92'
L17	N 60°47'48" W	129.74'
L18	N 22°15'07" W	59.25'
L19	N 58°49'20" E	89.67'
L20	N 58°49'20" E	95.01'
L21	N 58°25'29" E	95.05'
L22	N 23°02'26" W	108.11'
L23	S 67°20'21" W	80'
L24	N 23°02'26" W	110'
L25	S 64°33'18" W	80.07'



LINE BEARING DISTANCE

L26	N 67°22'56" E	116.56'
L27	S 16°43'59" E	20.92'
L28	N 23°27'56" W	28.66'
L29	S 23°27'56" E	70.01'
L30	S 32°56'45" W	14.85'
L31	N 32°56'45" W	70'
L32	N 32°56'45" W	55.18'
L33	S 35°30'43" E	14.85'
L34	S 35°30'43" E	19.38'
L35	S 16°42'40" W	57.61'
L36	N 16°42'40" W	12.17'
L37	N 16°00'29" E	67.84'
L38	N 16°00'29" E	59.99'
L39	N 16°00'29" W	71.04'
L40	N 16°00'29" W	70.53'
L41	S 16°42'40" W	37.47'
L42	S 16°42'40" W	39.26'
L43	S 16°42'40" W	30.21'
L44	S 35°30'43" E	25.33'
L45	N 32°56'45" W	62.99'
L46	N 02°28'24" W	85.04'
L47	N 02°28'24" W	59.84'
L48	N 18°43'58" W	29.32'
L49	S 18°43'58" E	29.32'
L50	N 02°21'55" W	70.14'
L51	N 02°28'47" W	72.2'
L52	S 02°25'24" E	74.19'
L53	S 23°27'56" E	31.38'
L54	S 23°27'56" E	42.33'
L55	N 16°43'59" W	9.01'
L56	S 16°43'59" E	35.86'
L57	N 67°26'12" E	89.05'
L58	S 70°40'06" W	42.85'
L59	N 70°40'06" E	59'
L60	N 01°17'12" W	64.58'
L61	S 01°17'12" W	19.18'
L62	S 01°17'12" W	19.18'
L63	S 01°37'01" W	50.81'
L64	S 01°37'01" W	76.03'
L65	N 01°37'01" E	75.03'
L66	N 01°37'01" E	73.03'
L67	N 01°37'01" E	71.03'
L68	N 01°37'00" E	69.58'
L69	S 01°36'52" W	70'
L70	S 02°12'32" W	70.01'
L71	S 32°12'32" E	19.67'
L72	S 30°50'41" E	50.34'
L73	S 30°50'41" E	65.15'
L74	S 32°22'03" E	65.43'
L75	S 32°12'32" E	29.89'
L76	S 32°12'32" E	93.71'
L77	S 30°50'41" E	74.09'
L78	S 30°50'41" E	41.01'
L79	S 32°12'32" E	41'
L80	S 32°12'32" E	84.45'
L81	S 01°37'01" W	70'
L82	S 01°37'01" W	70'
L83	S 01°37'01" W	70'
L84	S 01°37'01" W	70'
L85	S 01°37'01" W	70'
L86	S 01°37'01" W	70'
L87	S 01°37'01" W	70'
L88	S 01°37'01" W	70'
L89	S 01°37'01" W	70'
L90	S 01°37'01" W	70'
L91	S 01°37'01" W	70'
L92	S 01°37'01" W	70'
L93	S 01°37'01" W	70'
L94	S 01°37'01" W	70'
L95	S 01°37'01" W	70'
L96	S 01°37'01" W	70'
L97	S 01°37'01" W	70'
L98	S 01°37'01" W	70'
L99	S 01°37'01" W	70'
L100	S 01°37'01" W	70'
L101	S 01°37'01" W	70'
L102	S 01°37'01" W	70'
L103	S 01°37'01" W	70'
L104	S 01°37'01" W	70'
L105	S 01°37'01" W	70'
L106	S 01°37'01" W	70'
L107	S 01°37'01" W	70'
L108	S 01°37'01" W	70'
L109	S 01°37'01" W	70'
L110	S 01°37'01" W	70'
L111	S 01°37'01" W	70'
L112	S 01°37'01" W	70'
L113	S 01°37'01" W	70'
L114	S 01°37'01" W	70'
L115	S 01°37'01" W	70'
L116	S 01°37'01" W	70'
L117	S 01°37'01" W	70'
L118	S 01°37'01" W	70'
L119	S 01°37'01" W	70'
L120	S 01°37'01" W	70'
L121	S 01°37'01" W	70'
L122	S 01°37'01" W	70'
L123	S 01°37'01" W	70'
L124	S 01°37'01" W	70'
L125	S 01°37'01" W	70'
L126	S 01°37'01" W	70'
L127	S 01°37'01" W	70'
L128	S 01°37'01" W	70'
L129	S 01°37'01" W	70'
L130	S 01°37'01" W	70'
L131	S 01°37'01" W	70'
L132	S 01°37'01" W	70'
L133	S 01°37'01" W	70'
L134	S 01°37'01" W	70'
L135	S 01°37'01" W	70'
L136	S 01°37'01" W	70'
L137	S 01°37'01" W	70'
L138	S 01°37'01" W	70'
L139	S 01°37'01" W	70'
L140	S 01°37'01" W	70'
L141	S 01°37'01" W	70'
L142	S 01°37'01" W	70'
L143	S 01°37'01" W	70'
L144	S 01°37'01" W	70'
L145	S 01°37'01" W	70'
L146	S 01°37'01" W	70'
L147	S 01°37'01" W	70'
L148	S 01°37'01" W	70'
L149	S 01°37'01" W	70'
L150	S 01°37'01" W	70'
L151	S 01°37'01" W	70'
L152	S 01°37'01" W	70'
L153	S 01°37'01" W	70'
L154	S 01°37'01" W	70'
L155	S 01°37'01" W	70'
L156	S 01°37'01" W	70'
L157	S 01°37'01" W	70'
L158	S 01°37'01" W	70'
L159	S 01°37'01" W	70'
L160	S 01°37'01" W	70'
L161	S 01°37'01" W	70'
L162	S 01°37'01" W	70'
L163	S 01°37'01" W	70'
L164	S 01°37'01" W	70'
L165	S 01°37'01" W	70'
L166	S 01°37'01" W	70'
L167	S 01°37'01" W	70'
L168	S 01°37'01" W	70'
L169	S 01°37'01" W	70'
L170	S 01°37'01" W	70'
L171	S 01°37'01" W	70'
L172	S 01°37'01" W	70'
L173	S 01°37'01" W	70'
L174	S 01°37'01" W	70'
L175	S 01°37'01" W	70'
L176	S 01°37'01" W	70'
L177	S 01°37'01" W	70'
L178	S 01°37'01" W	70'
L179	S 01°37'01" W	70'
L180	S 01°37'01" W	70'
L181	S 01°37'01" W	70'
L182	S 01°37'01" W	70'
L183	S 01°37'01" W	70'
L184	S 01°37'01" W	70'
L185	S 01°37'01" W	70'
L186	S 01°37'01" W	70'
L187	S 01°37'01" W	70'
L188	S 01°37'01" W	70'
L189	S 01°37'01" W	70'
L190	S 01°37'01" W	70'
L191	S 01°37'01" W	70'
L192	S 01°37'01" W	70'
L193	S 01°37'01" W	70'
L194	S 01°37'01" W	70'
L195	S 01°37'01" W	70'
L196	S 01°37'01" W	70'
L197	S 01°37'01" W	70'
L198	S 01°37'01" W	70'
L199	S 01°37'01" W	70'
L200	S 01°37'01" W	70'
L201	S 01°37'01" W	70'
L202	S 01°37'01" W	70'
L203	S 01°37'01" W	70'

PRELIMINARY MAJOR SUBDIVISION PLAT
HOUSTON'S STATION
CENTRUST CAPITAL HOMES LLC
CROSS CREEK DRIVE, PARSON COUNTY, PARIS KY 40357

THOROUGHbred ENGINEERING
 P.O. BOX 481 LEXINGTON, KY 40588
 (502) 863-1756
 CIVIL DESIGN, LAND SURVEYING,
 GEOTECHNICAL ENGINEERING, DRILLING SERVICES,
 IBC SPECIAL INSPECTIONS, MATERIAL TESTING,
 CM-CEI-CONSTRUCTION SERVICES

PROJECT NO.: 03/19/2018
DRAWN BY: KWH
DATE: 03/19/2018
REVIEWED BY: ABC
ISSUED FOR SUBMITTAL
REVISION: DATE
DRAWING NAME: Prel. Subdivision Plat
C-1