

CODED DEMO/EROSION CONTROL NOTES

KEY	DESCRIPTION	KEY
①	SILT FENCE	— SF — SF —
②	CONSTRUCTION ENTRANCE — USE EX. ASPHALT ENTRANCE	
③	CONCRETE WASHOUT PIT — LOCATION MAY BE MODIFIED BY CONTRACTOR WITH APPROVAL OF ENGINEER	
LIMITS OF DISTURBANCE (EARTHWORK)—0.119 AC.		-----

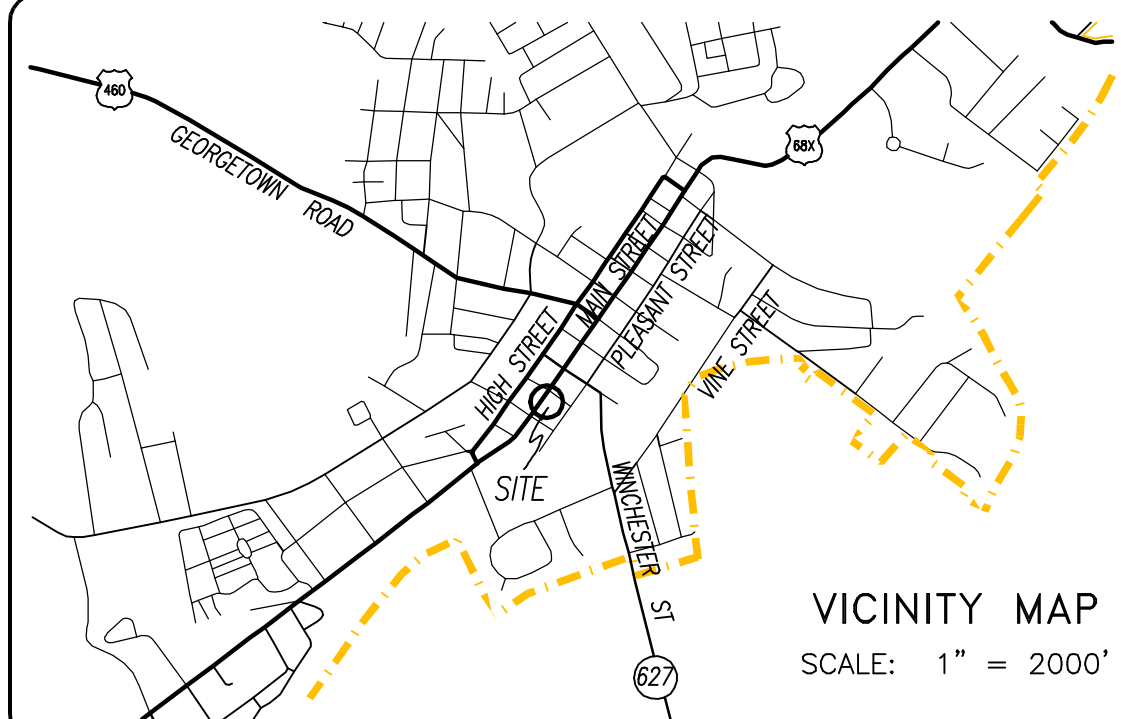
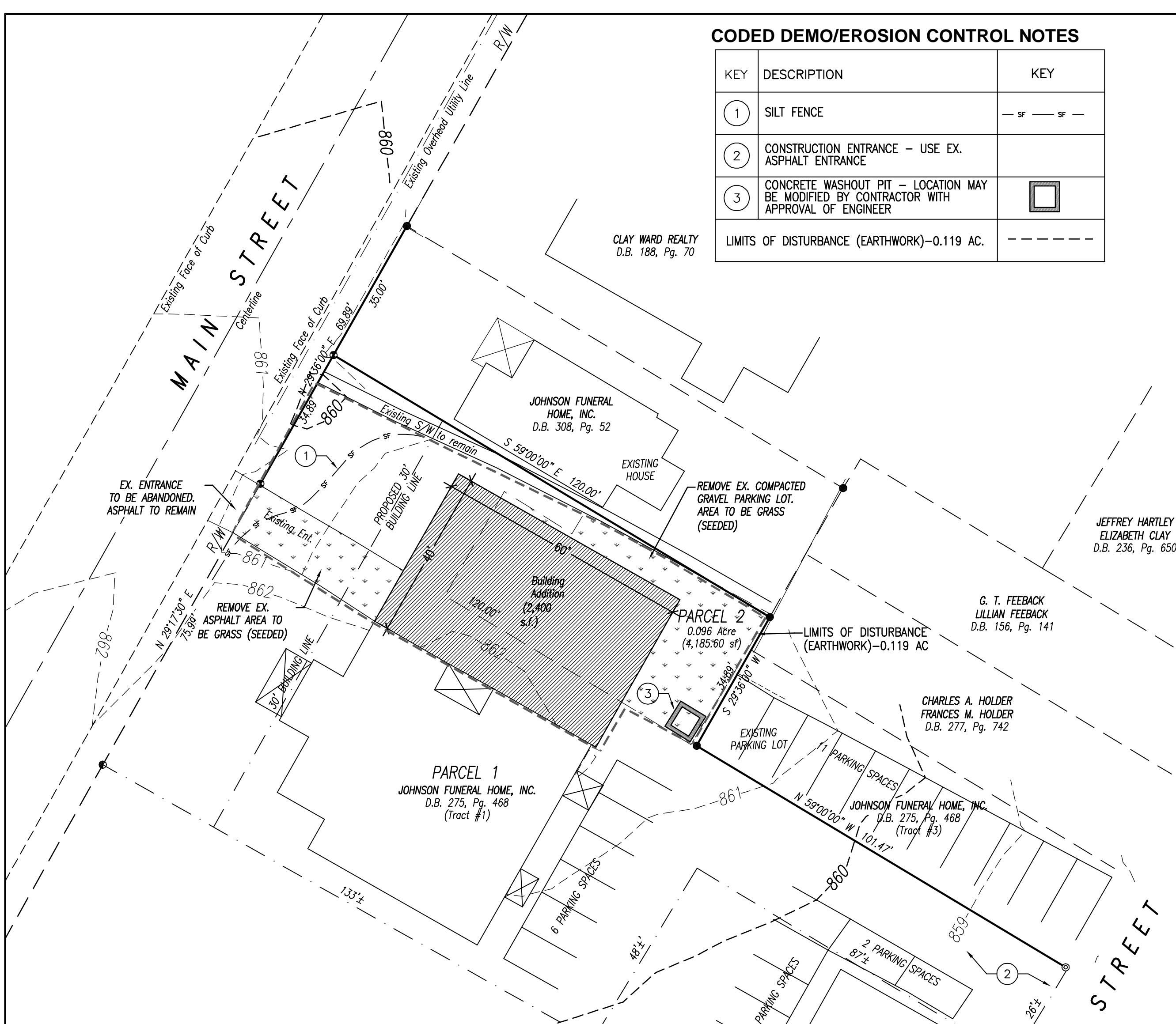
EROSION PREVENTION & SEDIMENT CONTROL NOTES

- THE APPROVED EROSION PREVENTION AND SEDIMENT CONTROL (EPSC) PLAN SHALL BE IMPLEMENTED PRIOR TO ANY LAND DISTURBING ACTIVITY ON THE CONSTRUCTION SITE. EPSC BMP'S SHALL BE INSTALLED PER THE PLAN AND CITY OF CYNTHIANA'S STANDARDS. NO NOI REQUIRED, EARTHWORK LIMITS OF DISTURBANCE LESS AND ONE ACRE; 0.51 ACRES.
 - ACTIONS MUST BE TAKEN TO MINIMIZE THE TRACKING OF MUD AND SOIL FROM CONSTRUCTION AREAS ONTO PUBLIC ROADWAYS. SOIL TRACKED ONTO THE ROADWAY SHALL BE REMOVED DAILY.
 - SOIL STOCKPILES SHALL BE LOCATED AWAY FROM STREAMS, PONDS, SWALES AND CATCH BASINS. TOPSOIL STOCKPILES AND BORROW SITES SHALL BE SURROUNDED BY SILT FENCES, RESEDED AND PLACED WHERE SOIL EROSION WOULD NOT FLOW INTO WATERWAYS OR ADJACENT PROPERTIES.
 - ALL DISTURBED AREAS THAT REMAIN INACTIVE FOR MORE THAN 21 DAYS SHALL BE STABILIZED BY SEEDING, SODDING, MULCHING, COVERING, OR BY OTHER EQUIVALENT EROSION CONTROL MEASURES AS SOON AS PRACTICABLE, BUT IN NO CASE MORE THAN 14 DAYS AFTER THE CONSTRUCTION ACTIVITY IN THAT PORTION OF THE SITE HAS TEMPORARILY OR PERMANENTLY CEASED.
 - SEDIMENT LADEN GROUNDWATER ENCOUNTERED DURING TRENCHING, BORING OR OTHER EXCAVATION ACTIVITIES SHALL BE PUMPED TO A SEDIMENT TRAPPING DEVICE PRIOR TO DISCHARGE INTO A STREAM, POND, SWALE, CATCH BASIN OR PUBLIC RIGHT OF WAY.
 - CONCRETE WASH OUT PIT TO BE PLACED ON SITE AT CONTRACTORS DISCRETION.
 - THE EROSION PREVENTION AND SEDIMENT CONTROL PLAN IS PREPARED AS A GUIDE FOR INITIAL EROSION CONTROL MEASURES TO BE INSTALLED AT THE JOB SITE. IF EROSION OCCURS IN OTHER SPECIFIC AREAS OF THE PROPERTY DURING CONSTRUCTION, THE CONTRACTOR IS RESPONSIBLE FOR INSTALLING SILT FENCE, OR OTHER EROSION CONTROL MEASURES AS NEEDED TO PREVENT EROSION AND/OR CONTROL SEDIMENTATION.
 - AT THE END OF EACH WORK DAY SITE SHALL BE CLEANED OF SEDIMENT AND DEBRIS. DISTURBED AREAS SHALL HAVE SILT CONTROL INSTALLED OR WILL BE STABILIZED SO THAT SEDIMENT WILL NOT GET OFF SITE OR INTO THE STORM SYSTEM DURING A RAIN EVENT.
 - MITIGATION MEASURES FOR DUST CONTROL SHALL BE IN PLACE DURING CONSTRUCTION AND DEMOLITION ACTIVITIES TO PREVENT FUGITIVE PARTICULATE EMISSIONS FROM REACHING EXISTING ROADS AND NEIGHBORHOODS.
 - NO INCREASE IN STORM WATER DISCHARGE VELOCITY AT THE POINT OF DISCHARGE AT THE PROPERTY LINE.
 - THE CONTRACTOR SHALL BE SOLELY RESPONSIBLE FOR REMOVING DIRT AND CONSTRUCTION DEBRIS CAUSED BY CONSTRUCTION ACTIVITIES FROM THE CITY'S STREETS FOR THE DURATION OF THE PROJECT.
 - ALL POTENTIAL EROSION SHALL BE CONTROLLED IN SUCH A MANNER SO AS TO PREVENT ANY DISPLACEMENT OF SILT TO THE ADJACENT PROPERTY OWNER'S RIGHT-OF-WAY. THIS CONTROL SHALL BE IMPLEMENTED THROUGH PROPER INSTALLATION OF SILT FENCE DURING THE CONSTRUCTION DURATION AND MAINTAINED UNTIL PROPER GROUND COVER HAS BEEN ESTABLISHED.
 - THE CONTRACTOR IS SOLELY RESPONSIBLE FOR THE PROPER INSTALLATION AND MAINTENANCE OF THE EROSION PREVENTION AND SEDIMENTATION CONTROL, STRUCTURES, SILT FENCE, ETC., SHALL BE INSPECTED REGULARLY AND SHALL BE REPAIRED, CLEANED, AND/OR REINSTALLED AS NECESSARY TO MEET THE INTENT OF THIS PLAN AND THE CITY OF OWENSBORO REGULATIONS.
 - THE GENERAL CONTRACTOR SHALL INSURE THAT ALL SUBCONTRACTORS ARE FAMILIAR WITH THE EROSION CONTROL MEASURES ON SITE AND THAT EACH SUBCONTRACTOR IS RESPONSIBLE FOR ANY DAMAGE THEY CAUSE TO ANY EROSION CONTROL STRUCTURE AND SHALL REPORT SAME TO THE GENERAL CONTRACTOR IMMEDIATELY.
 - SILT FENCES TO BE CLEANED OUT WHEN THEY BECOME ONE THIRD FULL. AFTER EVERY RAIN IN EXCESS OF ONE HALF INCH, ALL EROSION CONTROL MEASURES ARE TO BE INSPECTED AND CLEANED OR REPAIRED AS NECESSARY.
- 1.1 SPILL PREVENTION**
- A. GOOD HOUSEKEEPING:** THE FOLLOWING ARE MATERIAL MANAGEMENT PRACTICES THAT WILL BE USED TO REDUCE THE RISK OF SPILLS OR OTHER ACCIDENTAL EXPOSURE OF MATERIALS AND SUBSTANCES TO STORM WATER RUNOFF.
- AN EFFORT WILL BE MADE TO STORE ONLY ENOUGH PRODUCT TO DO THE JOB.
 - ALL MATERIALS STORED IN A NEAT, ORDERLY MANNER IN THEIR APPROPRIATE CONTAINERS AND, IF POSSIBLE, UNDER A ROOF OR OTHER ENCLOSURE.
 - PORTABLE RESTROOMS ARE TO BE LOCATED SO THAT ANY SPILL WILL NOT ENTER INTO THE STORMWATER RUNOFF.
 - PRODUCTS WILL BE KEPT IN THEIR ORIGINAL CONTAINERS WITH ORIGINAL MANUFACTURERS' LABEL.
 - SUBSTANCES WILL NOT BE MIXED WITH ONE ANOTHER UNLESS RECOMMENDED BY MANUFACTURER.
 - WHENEVER POSSIBLE, ALL OF A PRODUCT WILL BE USED UP BEFORE DISPOSING OF THE CONTAINER.
 - MANUFACTURERS' RECOMMENDATIONS FOR PROPER USE AND DISPOSAL WILL BE FOLLOWED.
 - THE SITE SUPERINTENDENT WILL INSPECT DAILY TO ENSURE PROPER USE AND DISPOSAL OF MATERIALS ONSITE.
 - PETROLEUM PRODUCTS IF STORED ON-SITE ARE TO BE CONTAINED WITHIN A DOUBLE WALL STEEL TANK. TANK IS TO BE INSIDE OF A BERMED AREA LINED WITH 6 MIL PLASTIC. CONTAINMENT AREA IS TO BE CAPABLE OF WITHHOLDING THE ENTIRE CONTENTS OF THE TANK IN THE EVENT OF A CATASTROPHIC SPILL.
- B. HAZARDOUS PRODUCTS:** HAZARDOUS MATERIALS ARE NOT EXPECTED TO BE BROUGHT TO THE SITE; IF THEY ARE REQUIRED THEN THE GUIDELINES BELOW SHOULD BE FOLLOWED.
- PRODUCT WILL BE KEPT IN ORIGINAL CONTAINERS UNLESS THEY ARE NOT RESEALABLE.
 - ORIGINAL LABELS AND MATERIAL SAFETY DATA SHEETS WILL BE RETAINED FOR PRODUCT INFORMATION.
 - IF SURPLUS PRODUCT MUST BE DISPOSED OF, MANUFACTURER'S, LOC.
- C. PETROLEUM PRODUCTS:** ALL ONSITE VEHICLES WILL BE MONITORED FOR LEAKS AND RECEIVE REGULAR PREVENTIVE MAINTENANCE TO REDUCE THE CHANCES OF LEAKAGE. PETROLEUM PRODUCTS WILL BE STORED IN TIGHTLY SEALED CONTAINERS, WHICH ARE CLEARLY LABELED. PORTABLE EQUIPMENT FUEL TANKS WILL BE LOCATED AS FAR AWAY FROM SURFACE WATER BODIES AS POSSIBLE. ALL OILS DRAINED FROM EQUIPMENT WILL BE CAPTURED IN PANS OR OTHER SUITABLE EQUIPMENT AND PLACED IN DRUMS FOR REMOVAL FROM SITE FOR DISPOSAL AT AN APPROVED OFF-SITE LOCATION.
- D. FERTILIZERS USED** WILL BE APPLIED ONLY IN THE MINIMUM AMOUNTS RECOMMENDED BY THE MANUFACTURER. ONCE APPLIED, FERTILIZER WILL BE WORKED INTO THE SOIL TO LIMIT EXPOSURE TO STORM WATER. STORAGE WILL BE IN A COVERED SHED. THE CONTENTS OF ANY PARTIALLY USED BAGS OF FERTILIZER WILL BE TRANSFERRED TO A SEALABLE PLASTIC BIN TO AVOID SPILLS.
- E. PAINTS:** ALL CONTAINERS WILL BE TIGHTLY SEALED AND STORED WHEN NOT REQUIRED FOR USE. EXCESS PAINT WILL NOT BE DISCHARGED TO THE STORM SEWER SYSTEM, BUT WILL BE PROPERLY DISPOSED OF ACCORDING TO MANUFACTURERS' INSTRUCTIONS OR STATE AND LOCAL REGULATIONS.
- F. CONCRETE TRUCKS** WILL BE REQUIRED TO WASH OUT OR DISCHARGE SURPLUS CONCRETE OR DRUM WASH WATER INTO A WASH OUT PIT THAT WOULD BE CONSTRUCTED BY THE CONTRACTOR. THE WASH OUT PIT SHALL BE DESIGNATED IN AN AREA THAT DOES NOT RECEIVE SIGNIFICANT RUNOFF AND DOES NOT DRAIN INTO A STORM NETWORK. UPON THE COMPLETION OF THE PROJECT, THIS AREA WOULD BE CLEARED OF THE CONCRETE AND THE SITE RESTORED.
- G. ANY ASPHALT SUBSTANCES USED** ONSITE WILL BE APPLIED ACCORDING TO KYDOH STANDARDS.
- H. SPILL CONTROL PRACTICES:** IN ADDITION TO THE GOOD HOUSEKEEPING AND MATERIAL MANAGEMENT PRACTICES DISCUSSED IN THE PREVIOUS SECTIONS OF THIS PLAN, THE FOLLOWING PRACTICES WILL BE FOLLOWED FOR SPILL PREVENTION AND CLEANUP.
- MANUFACTURERS' RECOMMENDED METHODS FOR SPILL CLEANUP WILL BE CLEARLY POSTED AND SITE PERSONNEL WILL BE MADE AWARE OF THE PROCEDURES AND THE LOCATIONS OF THE INFORMATION AND CLEANUP SUPPLIES.
 - MATERIALS AND EQUIPMENT NECESSARY FOR SPILL CLEANUP WILL BE KEPT IN THE MATERIAL STORAGE AREA ONSITE. EQUIPMENT AND MATERIALS WILL INCLUDE BUT NOT LIMITED TO BROOMS, DUSTPANS, MOPS, RAGS, GLOVES, GOGGLES, KITTY LITTER, SAND, SAWDUST, AND PLASTIC AND METAL TRASH CONTAINERS SPECIFICALLY DESIGNED FOR THIS PURPOSE.
 - ALL SPILLS WILL BE CLEANED UP IMMEDIATELY AFTER DISCOVERY.
 - THE SPILL AREA WILL BE KEPT WELL VENTILATED AND PERSONNEL WILL WEAR APPROPRIATE PROTECTIVE CLOTHING TO PREVENT INJURY FROM CONTACT WITH A HAZARDOUS SUBSTANCE.
 - SPILLS OF TOXIC OR HAZARDOUS MATERIAL WILL BE REPORTED TO THE APPROPRIATE STATE OR LOCAL GOVERNMENT AGENCY, REGARDLESS OF SIZE.
 - THE SPILL PREVENTION PLAN WILL BE ADJUSTED TO INCLUDE MEASURES TO PREVENT THIS TYPE OF SPILL FROM REOCCURRING AND HOW TO CLEAN UP THE SPILL IS THERE IS ANOTHER ONE. A DESCRIPTION OF THE SPILL, WHAT CAUSED IT, AND THE CLEANUP MEASURES WILL ALSO BE INCLUDED.
 - THE SITE SUPERINTENDENT FOR THE DAY-TO-DAY SITE OPERATIONS WILL BE THE SPILL PREVENTION AND CLEANUP COORDINATOR. HE WILL DESIGNATE AT LEAST THREE OTHER SITE PERSONNEL WHO WILL RECEIVE SPILL PREVENTION AND CLEANUP TRAINING. THESE INDIVIDUALS WILL EACH BECOME RESPONSIBLE FOR A PARTICULAR PHASE OF PREVENTION AND CLEANUP. THE NAMES OF RESPONSIBLE SPILL PERSONNEL WILL BE POSTED IN THE MATERIAL STORAGE AREA IN THE OFFICE TRAILER ONSITE.
- I. SPILL NOTIFICATION:** IN THE EVENT OF A SPILL, MAKE THE APPROPRIATE NOTIFICATION(S) CONSISTENT WITH THE FOLLOWING PROCEDURES.
- ANY SPILL OF GASOLINE GREATER THAN 25 GALLONS IN A 24-HOUR PERIOD OR SPILL OF DIESEL FUEL GREATER THAN 75 GALLONS IN A 24-HOUR PERIOD MUST BE REPORTED TO THE KENTUCKY ENVIRONMENTAL RESPONSE TEAM AT (800) 928-2380.
 - ANY SPILL OF OIL THAT 1) VIOLATES WATER QUALITY STANDARDS, 2) PRODUCES A 'SHEEN' ON A SURFACE WATER, OR 3) CAUSES A SLUDGE EMULSION MUST BE REPORTED TO THE KENTUCKY ENVIRONMENTAL RESPONSE TEAM AT (800) 928-2380.
 - ANY SPILL OF OIL OR HAZARDOUS SUBSTANCE TO WATERS OF THE STATE MUST BE REPORTED IMMEDIATELY BY THE TELEPHONE TO THE LIST STATE AGENCY AND PHONE NUMBER.
 - ANY RELEASE OF A HAZARDOUS SUBSTANCE THAT MAY BE A THREAT TO HUMAN HEALTH OR THE ENVIRONMENT MUST BE REPORTED TO THE LIST STATE AGENCY AND PHONE NUMBER IMMEDIATELY UPON DISCOVERY.

PLOTTED: 09/12/19 @ 1:00 BY APD

EROSION CONTROL PLAN
JOHNSON FUNERAL HOME, INC.
MAIN STREET

	SCALE	DATE	DARNELL ENGINEERING, INC. P.O. Box 175 Cynthiana, Kentucky 41031 (859) 234-8957 *THIS PLAT OF SURVEY REPRESENTS A BOUNDARY SURVEY AND COMPLIES WITH 201 KAR 18:150.*
	1" = 20'	10/14/19	
	FILE NO.	FILENAME	
	19-4223	JOHNSON	
FIELD BOOK	.CRD FILE		
76-62	PERDREW		
DRAWN BY	CHECKED BY		
APD	APD		



LINETYPE LEGEND:

	Survey Boundary
	Road Centerline
	Building Line
	Adjacent Property Line
	Entrance Driveway Centerline
	Easement Line

