



LAND USE WORKING GROUP
Meeting 3
November 19, 2019, 6:00 – 8:00 p.m.
Paris-Bourbon County Library, 701 High St.

Envision 2040 Comprehensive Plan



Attendees:

Anne Fuller
Stan Galbraith
Bart Horne
Ann Haley Morris
Drew Perraut
Grant Perraut
Chuck Redwine
Catesby Simpson
Mike Williams
Gordon Wilson
Betty Wittman

Ryan Sandwick, University of Kentucky CEDIK
Daniel Kahl, University of Kentucky CEDIK
Andrea S. Pompei Lacy, Bourbon County Joint Planning Office
Micki Sosby, Bourbon County Joint Planning Office

Agenda

1. Welcome Presentation: What is Land Use Planning?
Andrea S. Pompei Lacy, Bourbon County Joint Planning Office
2. Scenario-exercise: Land Use with LEGOS. Development and redevelopment in Bourbon County
Ryan Sandwick, University of Kentucky CEDIK
Daniel Kahl, University of Kentucky CEDIK

What is Land Use Planning? The process by which citizens and local government identify the community's vision for future growth.

Current 2017 Goals related to Land Use:

- To use planning as a mechanism to direct growth and development.
- To encourage growth and development through land use planning.
- To provide an adequate capacity of land to facilitate growth for all types of land uses.

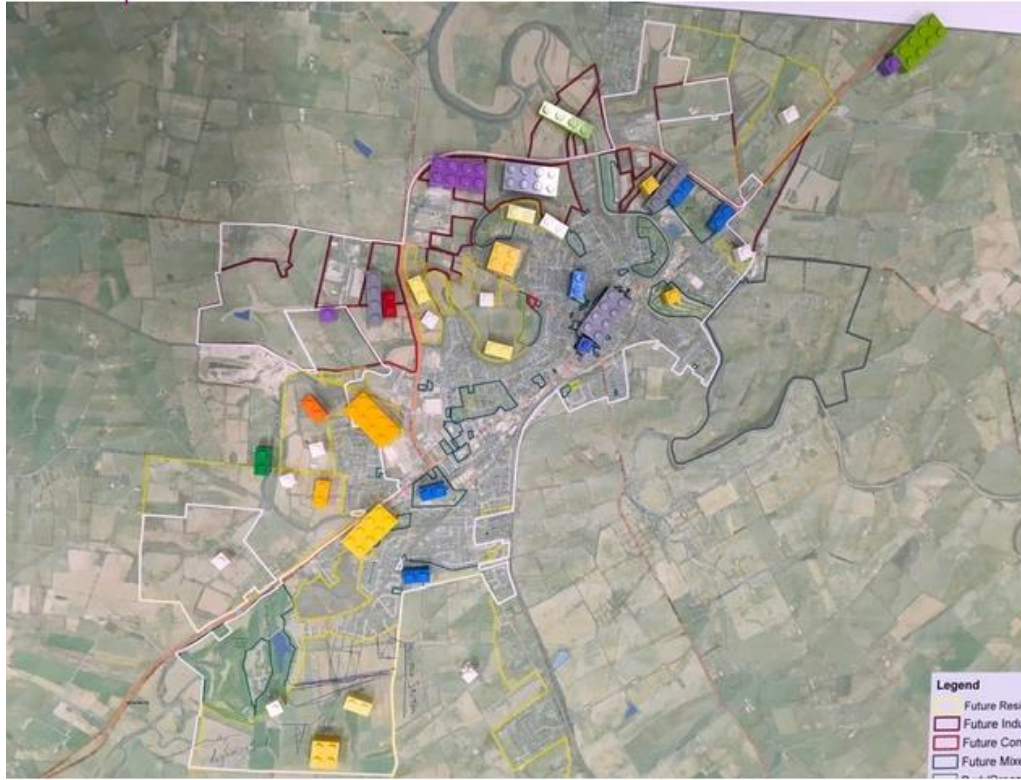
Introduction of Ryan Sandwick, University of Kentucky CEDIK and Daniel Kahl, University of Kentucky CEDIK

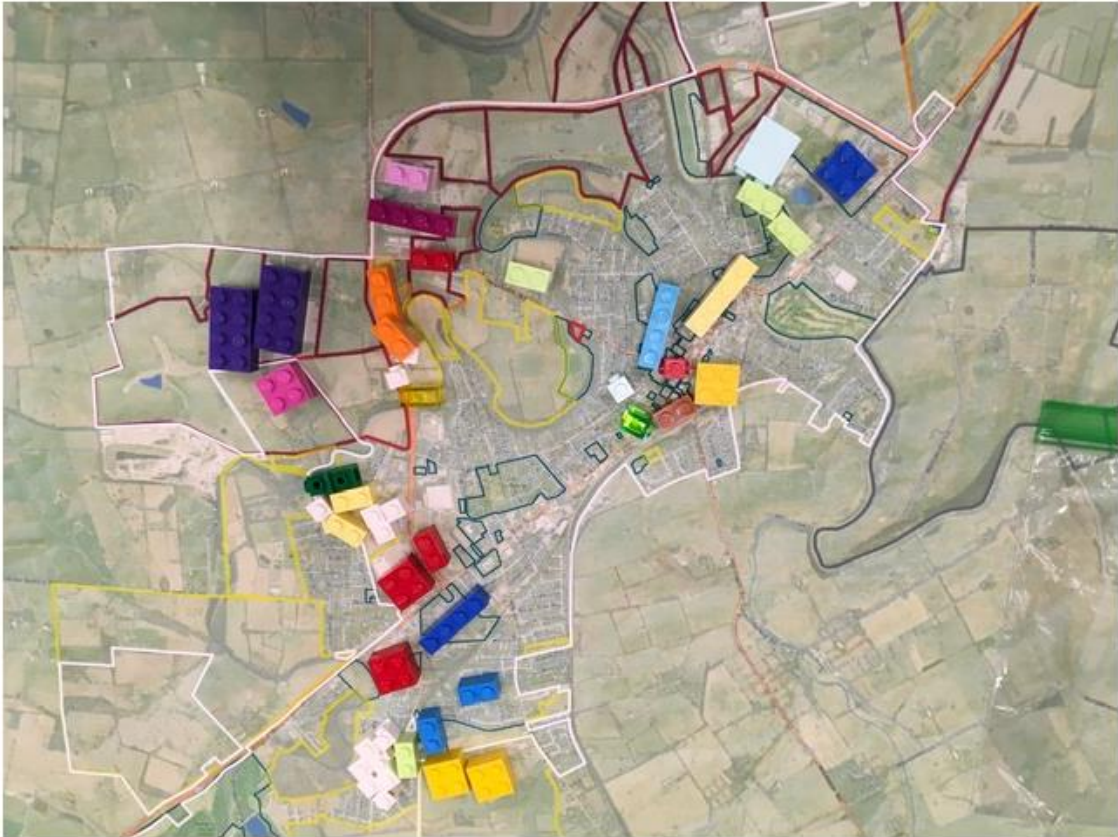
Thinking About Land Use. Development and redevelopment in Bourbon County.

Break out into groups to participate in an activity using Legos to try to think about current and future land use in Bourbon County. Different color Legos to represent different types of land use:

- ✚ Red – Commercial: Regional centers/malls, Big box retail, Strip Malls, Local retailers, Pop-up markets
- ✚ Purple – Industrial: National high-scale industry, Medium scale industry, Business Park, Delivery/light manufacturing, local/light industry
- ✚ Yellow – Residential: High density residential, Rowhouses/condos, Quad plex, Duplexes, Single family homes
- ✚ Green – Parks/Conservation Area: Nature preserver, Regional park, Neighborhood park, Pocket park, Parklet
- ✚ Blue – Institutional
- ✚ Grey – Mixed Use

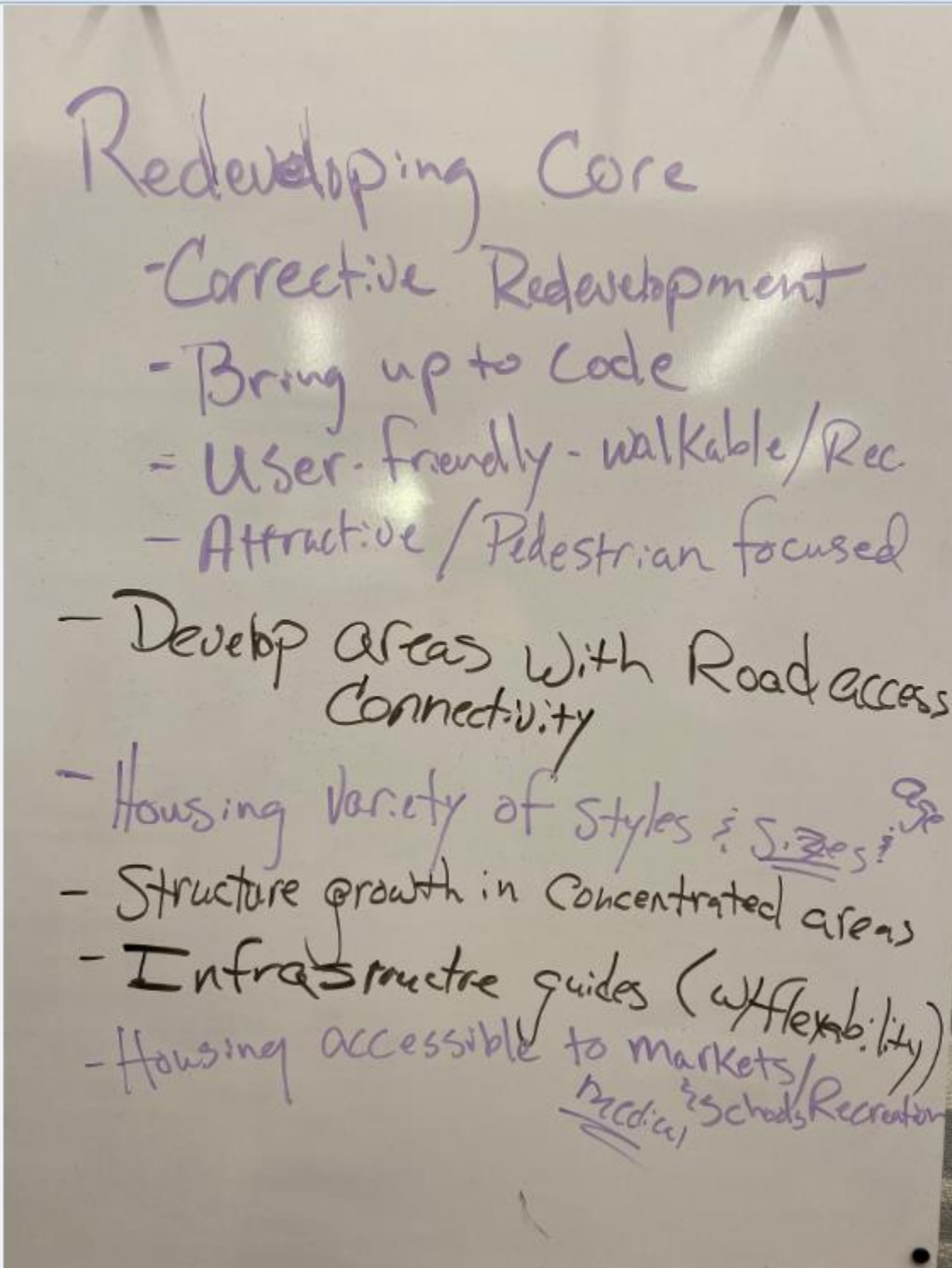








What was learned from the exercise and from discussion of important areas to address:



Current 2017 Goals related to Land Use:

- To use planning as a mechanism to direct growth and development.
- To encourage growth and development through land use planning.

- To provide an adequate capacity of land to facilitate growth for all types of land uses.

NEXT MEETING:

Wednesday, December 11 from 6-8 pm
Commission Chambers, City of Paris
525 High Street

Residential



Single family home



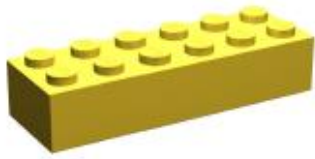
Duplexes



Quad plex



Row houses/
condos



High density
residential



Industrial



Local / light industry



Delivery/light manufacturing



Business park



Medium scale industry



National high scale industry



Commercial



Pop-up market



Local retailers



Strip malls



Big box retail



Regional centers/malls



Parks/Conservation Area



Parklet



Pocket Park



Neighborhood Park



Regional Park



Nature Preserve



