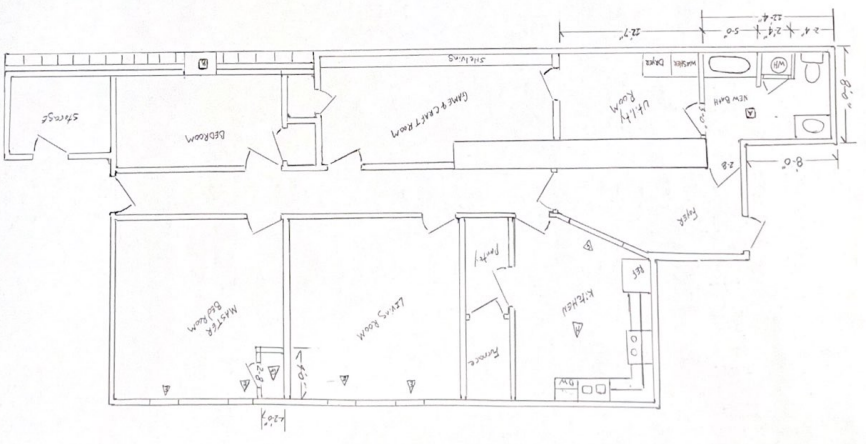


3/4" SCALE

EXISTING STRUCTURE

NICK DOPE 8 214-218 MAIN ST PARIS KY

PHOTO (857) 707-6815 DAVE HOMPHEUS (857) 473-5757



- 1. ENLARGED BATHROOM AND ROOM
- 2. SET OUT BLACK WALL
- 3. EXISTING 2x4 STUDS TO TOP CEILING ABOVE BATHROOM
- 4. NON LOAD BEARING WALL UNDER 2x8 DEEP CEILING WITH DRYWALL
- 5. EXISTING 4x8 TRUSSES TO A 3x5 DOUBLE HUNG EFFRESS WINDOW
- 6. FRAME TO GLASS WINDOW DEEP ONLY AND COVER WITH DRYWALL.
- 7. 2x4 GLASS CASE WITH 2x8 DARK WOOD TRUSSING WITH 1/2" DRYWALL.
- 8. TRUSSING 3x4 KITCHEN OFFICE/REAR, SHED, AND DASHWASHER ONLY.

